



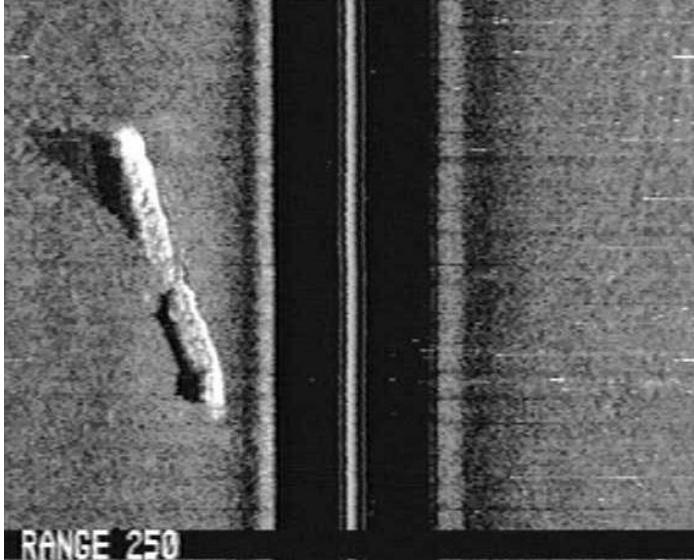
ECHOVISION TVS4

Thank you for taking the time to consider the Echovision TVS4 sidescan sonar system from Quest Electronics. The Echovision is ideally suited for a wide range of target searches. Whether you are looking for illegally dumped automobiles or long lost shipwrecks, the Echovision offers excellent range and resolution at an extremely competitive price.

The Echovision was designed to simplify sidescan sonar setup and operation. With minimal training, the average person can plug it in, turn it on and start searching. The intuitive 12 button keypad provides immediate access to the sonar controls, and the video data stream eases image storage and review. The on-screen position information enables quick relocation of targets, while the flexible gain, contrast and compression settings create incredible sonar images for a wide range of bottom types.

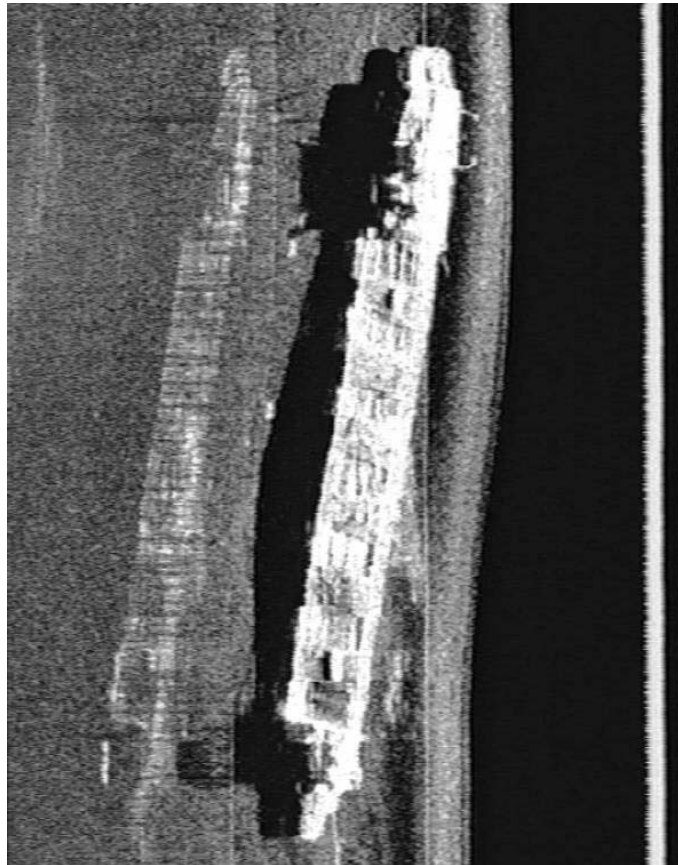
Echovision Features:

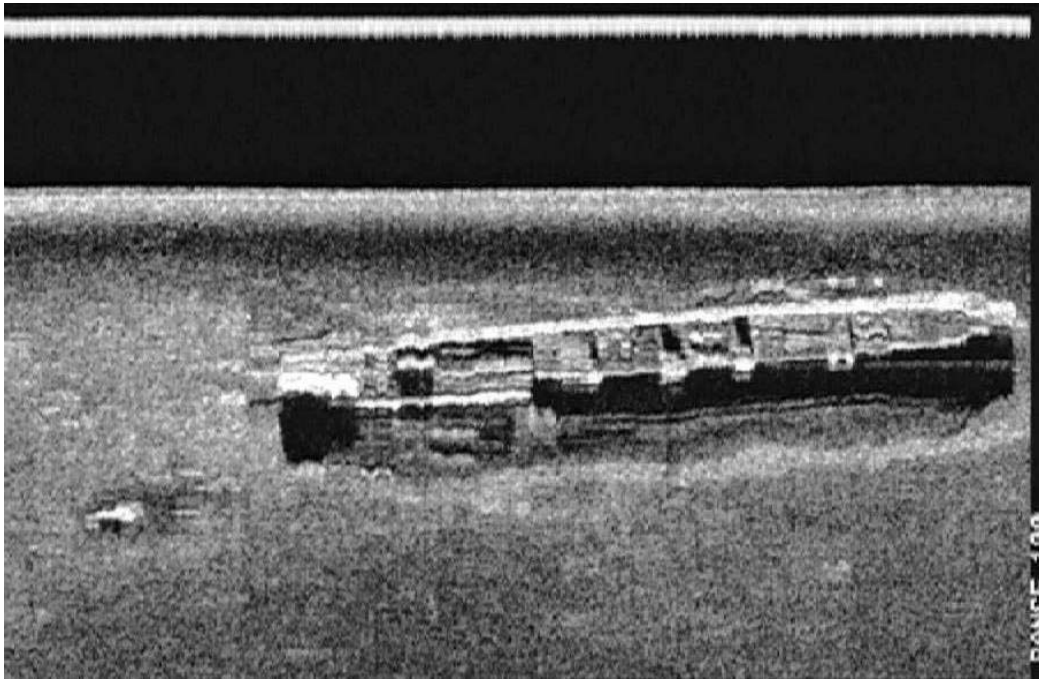
- Television display (NTSC or PAL available)
- NMEA 0183 input for on-screen GPS display
- Internal battery operated (specify external charger for 110V or 220V AC input)
- Dual channel and single channel operation (140 kHz left channel, 175 kHz right channel)
- 128 step digital programmable gain
- 25m, 50m, 75m, 100m, 150m, 200m, 250m and 300m ranges
- programmable ping width (0.5, 1.0, 1.5 and 2.0 pixels wide)
- programmable angle/depth based time varied sensitivity
- 16 level grayscale
- digital dynamic range compression
- digital contrast control
- 0.5 degree horizontal beam width, 50 degree vertical beam height
- 50m Vectran reinforced cable
- 2003 closeout price of \$8,200.



Steel shipwrecks can be imaged at long ranges. This image accurately portrays the condition of the Cowell in Whitefish Bay, Lake Superior, USA. The high signal/noise ratio allows shadows to be seen in the soft bottom over 200m away. The length of shadow indicates the height above the bottom. The mid section of the ship is buried in the bottom, while the stern sticks up high above the bottom.

Medium ranges provide excellent wreck site surveys. The profile of the wreck is readily seen in the shadow and provides the first indication of the wreck identity. Even the 100m range setting shows small features such as the lifeboat davits and shadows of both bow and stern masts of the Judge Hart. The Echovision TVS4 is highly sensitive to small changes in echo intensity as evidenced by the lighter shadow of the wood pilot house compared to the rest of the steel wreck. Wood allows some of the sound that hits it to pass through, which results in a dark gray shadow of the pilot house instead of the black shadow cast by the main hull.





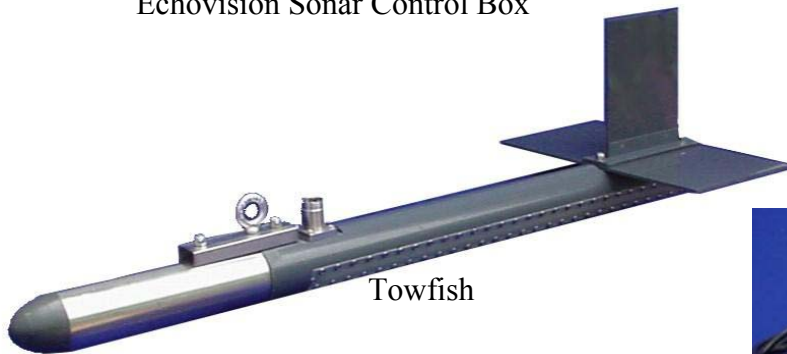
Side scan sonar often reveals significant pieces of wreckage away from the main wreck site. This image of the wood steamer Osbourne in Whitefish Bay, Lake Superior shows a large object off the stern.



Echovision Sonar Control Box



Keypad Zoom



Towfish



Battery Charger